



2019 J/24 World Championship

October 19th to October 26, 2019

Organizing Authority is

Twelve USA, J/24 Fleet 10, the US J/24 Class Association and

the International J/24 Class Association

Miami, Florida, USA

www.j24worldsmiami.com

Sailing Instructions

1. Rules

- 1.1 The regatta will be governed by the rules as defined in the Racing Rules of Sailing (RRS).
- 1.2 The following prescriptions of U.S. Sailing, the national authority will apply: US Sailing prescriptions for RRS 60.3, 61.4, 67 and 76.1 will apply and are stated in full in Attachment A. They are available online at <https://www.ussailing.org/wp-content/uploads/2018/01/2017-2020-US-Prescriptions-final-10.4.2016.pdf>.
- 1.3 The Regatta Regulations of the International J/24 Class Association (IJCA) will apply.
- 1.4 Support Vessels – RRS 41 shall apply from the time a boat leaves her mooring for the first race of each day and until she returns to her mooring after racing. If Race Committee displays Race Signal AP over H, RRS 41 restrictions are suspended until she leaves her mooring again. This changes the preamble to Part 4 rules.
- 1.5 [DP][NP]Bow numbers will be assigned to each boat and will be used as identification for the boat during the regatta. Bow numbers shall be applied in accordance with the instructions supplied and shall remain affixed until after a boat hauls out at the end of the regatta.
- 1.6 In accordance with RRS G3, a boat chartered or loaned for this event may carry national letters or a sail number in contravention of the class rules.
- 1.7 If there is a conflict between languages, the English text will take precedence.
- 1.8 RRS Appendix T: Arbitration shall apply to this event, except as modified by sailing instruction 14.1.

- 1.9 RRS Appendix P: Special Procedures for Rule 42 will apply to this event as modified by sailing instruction 14.4.
- 1.10 RRS 61.1(a) is changed so that the red flag displayed by a protesting boat shall have a hoist of not less than 150mm and a fly of not less than 200mm.
- 1.11 The notation [DP] in a rule in the sailing instructions means that the penalty for a breach of that rule may be, at the discretion of the international jury, less than disqualification. The notation [NP] in a rule in the sailing instructions means that a boat may not protest another boat for a breach of this rule. This changes RRS 60.1(a).
- 1.12 The international Jury may impose penalties less than disqualification (DPI), for violation of the class rules and racing rules other than those of Part 1 and Part 2.
- 1.13 Class rule C.2.1 (b) is replaced with class rule J.4.3 that allows limited crew substitution.
- 1.14 Class rule C.10.2 is replaced by class rule J.2 that allows a spare spinnaker with restrictions.
- 1.15 RRS 60.4(a)(1) is changed to read: “....but not rules 41, 42, 44, 46, and 49.2 sentences 1 and 2, or....”

2. Notices to Competitors:

- 2.1 Notices to competitors will be posted on the official notice board located at Shake A Leg in the breezeway on the first floor.
- 2.2 Any questions regarding these Sailing Instructions shall be submitted in writing to the PRO. The questions and any answers will be posted on the official notice board as soon as possible.

3. Changes to Sailing Instructions:

- 3.1 Any change to the Sailing Instructions will be posted before 0900 on the day it will take effect, except that any change to the schedule of races will be posted by 2000 on the day before it will take effect.
- 3.2 The following restrictions on the number of boats entered apply:

The maximum number of entries accepted by the Organizing Authority will be 85 boats. Order of acceptance shall be by boats completing the required form indicated in NoR 3.3 and the Organizing Authority receiving the required fee indicated in NoR 4.

4. Signals Made Ashore:

- 4.1 Signals made ashore will be displayed at Shake A Leg flag pole.
- 4.2 When flag AP is displayed ashore, ‘1 minute’ is replaced with ‘not less than 75 minutes’ in the race signal AP. This changes RRS Race Signals.
- 4.3 When flag Y is displayed ashore, RRS 40 applies at all times while afloat. This changes the Part 4 preamble.

5. Schedule of Races:

5.1

Day	Date	Time	Event/Activity
Friday	18 October	1200 - 1700	Inspection by appointment only Contact Tim Winger timwingr@gmail.com
Saturday	19 October	0800 - 1800	Registration/Inspection/Crew Weigh-in
Sunday	20 October	0800 - 1800	Registration/Inspection/Crew Weigh-in
Monday	21 October	0800 - 1500 1300 1800 1800 1800	Registration/Inspection/Crew Weigh-in Practice Race Competitors' Meeting J Boats/J24 US Class Opening Ceremonies All Boats Afloat
Tuesday	22 October	0800 – 0830 0830 1100 After racing	Crew Weigh-in* Competitor Briefing Warning for First Race of the Day Bacardi Party
Wednesday	23 October	0800 – 0830 0830 1100 After racing	Crew Weigh-in* Competitor Briefing Warning for First Race of the Day Bacardi Party
Thursday	24 October	0800 – 0830 0830 1100 After racing	Crew Weigh-in* Competitor Briefing Warning for First Race of the Day Bacardi Party
Friday	25 October	0800 – 0830 0830 1100 After racing	Crew Weigh-in* Competitor Briefing Warning for First Race of the Day Bacardi Party
Saturday	26 October	0800 – 0830 0830 1100 1500 1800	Crew Weigh-in* Competitor Briefing Warning for First Race of the Day No Warning after this time Citi National Bank Closing Ceremonies and Awards

*These scheduled crew weigh-ins are only for Technical Committee approved replacements or crews specified per SI 1.13

5.2 Ten races are scheduled over five consecutive days.

5.3 Two races are scheduled per day. One extra race per day may be sailed provided that the regatta does not become more than one race ahead of schedule and the change is made according to the provisions of the sailing instructions. If the regatta is behind schedule, extra races to a maximum of four races may be sailed in a single day.

6. Class Flag:

The J/24 Class Flag (Blue insignia on a white background) shall be used in accordance with RRS 26.

7. Racing Areas:

Attachment B shows the location of the racing areas.

8. Courses:

- 8.1 Courses will be windward/leeward with five (5) legs (course 5) or four (4) legs (course 4)
- 8.2 The diagrams in Attachment C show the courses.
- 8.3 No later than the warning signal, the race committee signal boat will display the course designator, the approximate compass bearing and the distance of the first leg. The RC will also broadcast this information. Failure to broadcast or to receive this information shall not constitute grounds for granting redress. This changes RRS 62.1(a).
- 8.4 An offset mark (designated mark 1a) will be used in conjunction with mark 1. The offset mark will be placed to the left of the weather mark (looking up wind) at approximately a right angle to the weather leg and approximately 12-15 boat lengths to port of mark 1.
- 8.5 Mark 2 will be a gate consisting of two marks (marks 2s/2p). If the gate is not present, mark 2 shall be rounded to port. Except when there is a change of course, the gate will be positioned approximately to windward of the RC signal boat at a distance to the discretion of the RC. The gate may be laid after the starting signal.
- 8.6 Except for a change of course, the finish for course 5 will be to windward of mark 1.
- 8.7 No five (5)-leg course will be shortened to less than four (4) legs in length, and no four (4)-leg course will be shortened to less than three (3) legs in length. For purpose of this sailing instruction only, the distance between mark 1 and the offset mark will not be regarded as a leg of the course. This changes RRS 33.

9. Marks:

- 9.1 Marks 1, 1a, 2s/2p, start and finish will be:

Mark	Original	New Marks per SI 12.1
1	white Bacardi cylinder	orange cylinder
1a (offset)	yellow cylinder	yellow cylinder
2s/2p (gate)	white Bacardi cylinders	orange cylinders
Start	Race Committee boats	
Finish	(Course 4 & Course 5) Race Committee boats	

- 9.2 A race committee boat signalling a change of a leg of the course is a mark as provided in instruction 12.3.

10. Areas That Are Obstructions:

No areas are designated as obstructions.

11. Start:

- 11.1 Races will be started using RRS 26 with the warning signal made 5 minutes before the starting signal.
- 11.2 **Two-Segment Starting Line** (3 RC Vessels starting line)
- (a) the starting line will consist of three RC vessels: port-end line vessel, mid-line signal vessel, and starboard-end line vessel.
- (b) the starting line will be two line segments: one between a staff displaying an orange flag on the mid-line signal vessel and a staff displaying an orange flag on the port-end line vessel; the other between a staff displaying an orange flag on the mid-line signal vessel and a staff displaying an orange flag on the starboard-end line vessel.
- (c) The display of flag X will be made on the RC midline signal boat in accordance with RRS 29.1 Individual and general recall flags may subsequently be displayed additionally by the two RC pin end starting line boats.
- 11.3 RC may broadcast starting information and countdowns on the **VHF channel 71**. Failure to make or receive such broadcasts will not be grounds for redress. This changes RRS 62.1(a).
- 11.4 The RC will attempt to broadcast twice the bow numbers or sail numbers of all boats subject to individual recall (RRS 29.1), UFD (RRS 30.3), BFD (RRS 30.4); it will not alter the list based on a boat's actions subsequent to the start. Failure to make or receive such broadcasts will not be grounds for redress. This changes RRS 62.1(a).
- 11.5 RRS 30.4 is changed to permit the RC to display sail number or bow number after a general recall.
- 11.6 [NP] A boat starting later than 6 minutes after her starting signal shall be scored Did Not Start (DNS) without a hearing. This changes RRS 63.1, A4 and A5.

12. Change of the Next Leg of the Course:

- 12.1 A course change to the next leg of the course will be signaled according to RRS 33.
- 12.2 To change the next leg of the course, the race committee will lay a new mark (or move the finishing line) and remove the original mark as soon as practicable. When in a subsequent change a new mark is replaced, it will be replaced by an original mark.
- 12.3 Except at a gate, boats shall pass between the race committee boat signaling the change of the next leg and a nearby mark, leaving mark to port and race committee boat to starboard.

13. The Finish:

- 13.1 The finishing line will be between a staff displaying an orange flag on the finishing line boat and a staff displaying an orange flag on a nearby RC boat or an inflatable mark.

14. Penalty System:

14.1 RRS Appendix T will apply, as modified below.

14.1.1 A boat may accept a Post-Race scoring penalty of 30% only until the end of the Protest time Limit by completing a Penalty Acceptance Form available at the Protest Desk. This changes RRS App T.1.(a) and T.1.(b).

14.1.2 A boat accepting a Post-Race scoring penalty after an arbitration hearing shall be penalized 40%. This changes RRS App T.1.(b).

14.2 The first two sentences of rule 44.1 are changed to: "A boat may take a One-Turn Penalty when she may have broken one or more rules of Part 2 or rule 31 in an incident while *racing*. However, when she may have broken one or more rules of Part 2 while in the *zone* around a *mark* other than a starting *mark*, her penalty shall be a Two-Turns Penalty."

14.3 Except if the course is shortened to finish at the windward mark, penalties while in the zone of the windward mark or on the offset leg may be delayed and taken as soon as possible on the downwind leg. This changes RRS 44.2

14.4 RRS Appendix P applies, as below.

14.4.1 Rule P1.1 is changed to read, "Only members of the jury may serve as observers and act in accordance with rule P1.2."

14.4.2 P1.2 is changed to read "An observer appointed under rule P1.1 who sees a boat breaking rule 42 may penalize her by, as soon as reasonably possible, making a sound signal, pointing a yellow flag at her and hailing her sail number or bow number, even if she is no longer racing. A boat so penalized shall not be penalized a second time under rule 42 for the same incident."

14.4.3 Rule P2.1 is changed to read, "When a boat is penalized under rule P1.2 her penalty shall be a one-turn penalty under rule 44.2. If she fails to take it she shall be disqualified without a hearing."

14.4.4 Rule P2.2, P2.3, P2.4 shall not apply.

15. Time Limits and Target Times:

15.1 The target time for races is 75 to 90 minutes. Failure to meet the target time will not be grounds for redress. This changes RRS 62.1(a).

15.2 Boats failing to finish within 30 minutes after the first boat sails the course and finishes will be scored TLE (Time Limit Expired) without a hearing. A TLE score shall be two more points than the number of boats that have finished within the time limit. This changes RRS 35, 63.1, A4 and A5. The RC will lower the orange line flags when the finishing window is closed.

16. Protests and Requests for Redress

- 16.1 Protest forms are available at the jury desk located at Shake A Leg in the first floor breezeway. Protests and requests for redress or reopening shall be delivered there within the appropriate time limit.
- 16.2 The protest time limit is 60 minutes after the Signal boat docks or from the time the race committee signals no more racing for the day, whichever is later. The same time limit applies to protests by the race committee and jury about incidents they observe in the racing area. This changes RRS 61.3 and 62.2
- 16.3 Notices will be posted no later than 30 minutes after the protest time limit to inform competitors of hearing in which they are parties or named as witnesses. Hearings will be held in the protest room, located at Shake A Leg 2nd floor Classroom.
- 16.4 The race committee or jury will post a list of penalties being assigned by the race committee or jury (including RRS 42 violations under Appendix P) prior to the end of the protest time limit. The deadline for requests for redress based on these assigned penalties will be either 30 minutes after posting or the protest time limit, whichever is later.
- 16.5 Notices of protests by the race committee, technical committee or jury will be posted to inform boats under RRS 61.1(b).
- 16.6 On the last scheduled day of racing, a request for redress based on a jury decision shall be delivered no later than 30 minutes after the decision was posted. This changes RRS 62.2.
- 16.7 RRS 66 the third sentence is changed to read: "A party to the hearing may ask for a reopening in writing and identify the reason for it no later than 24 hours after being informed of the decision."
- 16.8 Decisions of the international jury will be final as provided in RRS 70.5.

17. Scoring:

- 17.1 Four races are required to be completed to constitute a championship.
- 17.2 When fewer than five races have been completed, a boat's series score will be the total of her race scores.
- 17.3 When five or more races have been completed, a boat's series score will be the total of her race scores, excluding her worst score.

18. Safety Regulations:

- 18.1 [NP][DP]A boat that retires from a race or does not intend to compete in a race or returns to the racing area shall notify the race committee as soon as possible.
- 18.2 [NP][DP] Before the warning signal of the first race each day, each boat shall sail on starboard tack past the stern of a designated race committee boat displaying flag L and hail her bow number until acknowledged by the race committee repeating her bow number.

19. Replacement of Crew or Equipment:

- 19.1 There shall be no crew replacement or substitutions unless allowed as described in sailing instruction 1.13
- 19.2 Even if replacement/substitution is allowed, the number of crew shall not change during the regatta.
- 19.3 Substitution of damaged or lost equipment will not be allowed unless authorized by the technical committee. Requests for substitution shall be made to the technical committee at the first reasonable opportunity. Substitution of spinnaker poles or rudders with spares that have been measured and carry event limitation marks for this event may be done without notification.

20. Equipment and Measurement Checks:






- 20.1 On the water, a boat can be instructed by a member of the race committee or the technical committee to proceed immediately to a designated area for inspection by the technical committee.
- 20.2 Ashore, equipment may be inspected or measured at times specified in the class rules, the notice of race, and immediately following return to shore after racing.

21. Event Advertising:

[NP][DP] Boats shall display event advertising that is supplied by the organizing authority. Such advertising shall be installed according to the instructions supplied with them and shall remain in place for the duration of the regatta.

22. Official Boats:

Official Vessels shall be marked as follows:

VESSEL	FLAG
RC Signal	
Starboard/Port-end RC	
Jury	
Technical Committee/Measurement	
Safety	

23. Support Vessels:

- 23.1 [NP][DP] Support vessels shall comply with sailing instruction 1.4.
- 23.2 [NP][DP] Support vessels shall register during scheduled registration, declaring to which boat or boats they are attached. They may be required to display an identification flag supplied by the organizing authority and are required to follow instructions of the organizing authority.
- 23.3 [NP][DP] Support vessels and support persons shall remain no less than 150m from the race course from the warning signal until all boats have finished or retired or the race committee has signaled a postponement, general recall or abandonment.
- 23.4 [NP][DP] Support boat drivers shall have valid third-party liability insurance in the same amount as is required of each participating boat and provide proof of that insurance at registration.

24. Trash Handling:

- 24.1 [NP][DP] Competitors shall not dispose of trash in the water. Trash shall be held for proper disposal. This changes RRS 55.

25. Afloat and Haul-out Restrictions:

- 25.1 [NP][DP] Boats shall be afloat by 1800 hours on October 21, 2019 and shall not be hauled out during the regatta except with, and according to the terms of prior written permission of the TC. This restriction also applies to rudders.

26. Diving Equipment, Plastic Pools and Other Prohibited Actions:

- 26.1 [DP] Underwater breathing apparatus and plastic pools or their equivalent shall not be used between the time the boat is afloat and the end of the regatta. The hull may be cleaned at any time by swimming or keelhauling using ropes, cloth or other equipment designed for that use.
- 26.2 [DP] Careening by any means for the purpose of cleaning or inspecting the hull is prohibited during the regatta.
- 26.3 [DP] Use of dehumidifiers or electric fans is prohibited at all times while boats are afloat.

27. Radio Communication:

- 27.1 [DP] Except in an emergency, a boat shall not make voice or data transmissions and shall not receive voice or data communication that is not available to all boats. This shall apply from the time she leaves her mooring for the first race of the day until racing for the day is complete.
- 27.2 The RC will use **VHF Channel 71** to communicate to the fleet as a courtesy to all competitors, including the location of the starting area, countdown to the warning and prep, OCS, UFD and BFD bow or sail numbers, general recalls and postponements. Failure to make broadcasts or failure to hear broadcasts shall not constitute grounds for granting redress. This changes rules 62.1(a)

28. Prizes:

- 28.1 Prizes will be awarded to at least the top 15% of boats entered.
- 28.2 The IJCA Perpetual Trophies will be awarded to the winning crew.
- 28.3 The Dr. Turner Perpetual Trophy will be awarded to the top youth entry comprised of a crew in which none are over the age of 25 years.
- 28.4 The Jaeger Perpetual Trophy will be awarded for the top women's entry in which the entire crew is comprised of women.

29. Disclaimer of Liability:

- 29.1 All competitors will be required to sign a Competitor Liability Waiver form to be provided in the registration package.
- 29.2 In addition to RRS 4, DECISION TO RACE, the safety of a boat and her entire management shall be the responsibility of the person in charge of the boat. Sailing is an activity that has an inherent risk of damage and injury. Competitors in this event are participating entirely at their own risk. The regatta organizers (organizing authority, race committee, International Jury, host club, sponsors, or any other participating organization or official) will not be responsible for damage to any boat or other property or the injury to any competitor, including death, sustained as a result of participation in these events.

30. Insurance:

- 30.1 Each participating boat shall be insured with valid third party insurance with a minimum coverage of \$300,000 USD per incident or the equivalent.

Further Information, contact the following:

Regatta Chair: Mark Pincus	mwpincus@aol.com	305-915-1438
Organizing Chair: Sara Zanobini	zanobinis@gmail.com	305-510-7024
PRO Mark Foster IRO USA	mfoster1053@gmail.com	361-816-9801
Chief Judge Giorgio Davanzo IJ ITA	giorgio.davanzo@gmail.com	

Website: www.j24worldsmiami.com

ATTACHMENT A

Rule 60.3 After rule 60.3 add

US Sailing prescribes that rule 60.3(b) is changed to:

(b) request redress for a boat or call a hearing to consider redress; or

Rule 61.4 Add rule 61.4

61.4 Fees for Protests and Requests for Redress US Sailing prescribes that no fees shall be charged for protests or requests for redress.

Rule 67 After rule 67 add

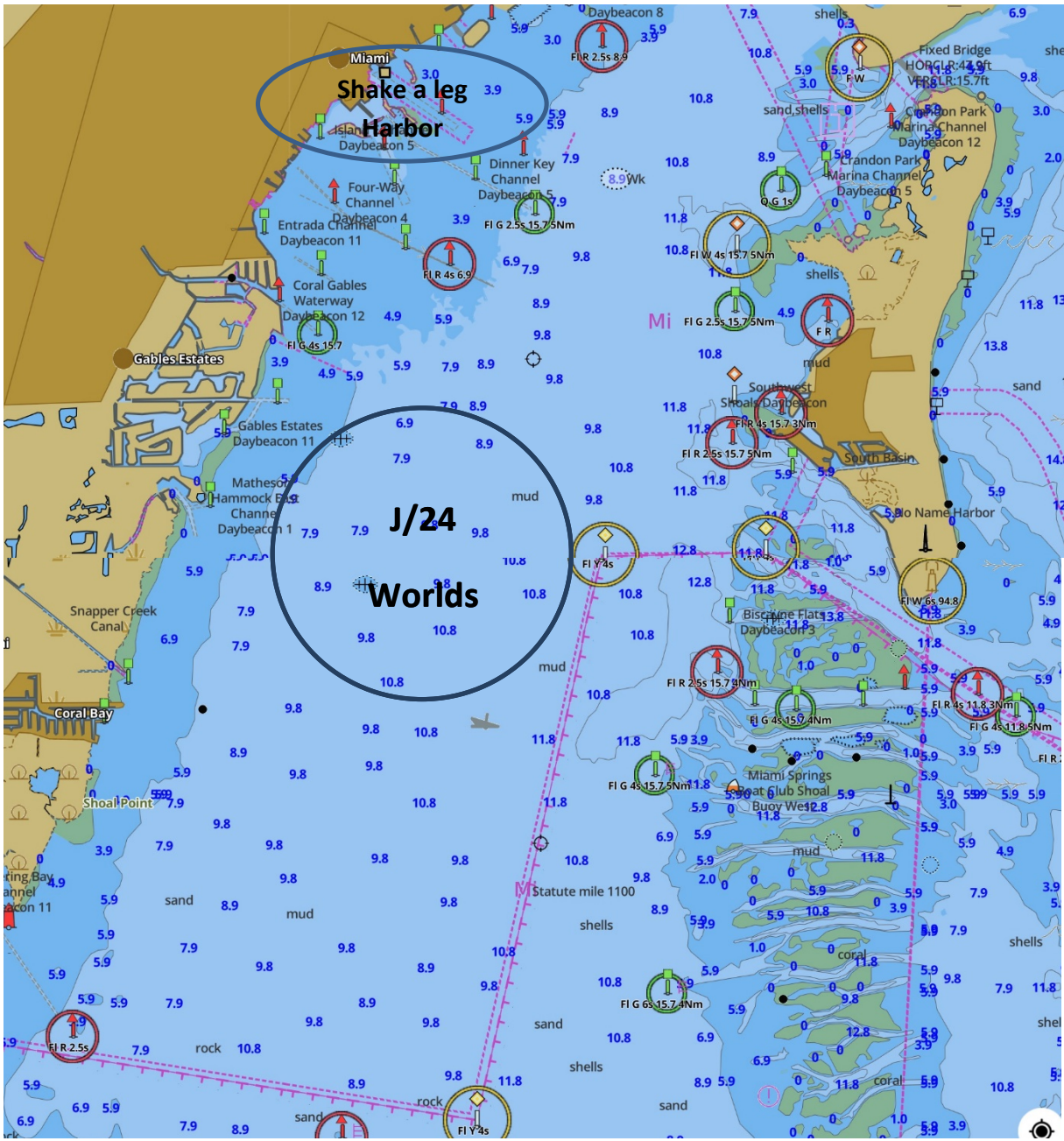
US Sailing prescribes that: (a) A boat that retires from a race or accepts a penalty does not, by that action alone, admit liability for damages. (b) A protest committee shall find facts and make decisions only in compliance with the rules. No protest committee or US Sailing appeal authority shall adjudicate any claim for damages. Such a claim is subject to the jurisdiction of the courts. (c) A basic purpose of the rules is to prevent contact between boats. By participating in an event governed by the rules, a boat agrees that responsibility for damages arising from any breach of the rules shall be based on fault as determined by application of the rules, and that she shall not be governed by the legal doctrine of 'assumption of risk' for monetary damages resulting from contact with other boats.

Rule 76.1 After rule 76.1 add

US Sailing prescribes that an organizing authority or race committee shall not reject or cancel the entry of a boat or exclude a competitor eligible under the notice of race and sailing instructions for an arbitrary or capricious reason or for reason of race, color, religion, national origin, gender, sexual orientation, or age.

ATTACHMENT B

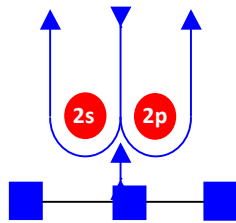
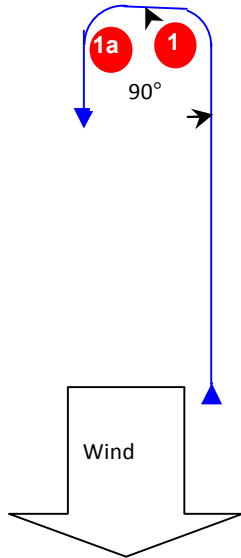
RACING AREA LOCATION



ATTACHMENT C

Course Illustrations

Course 4

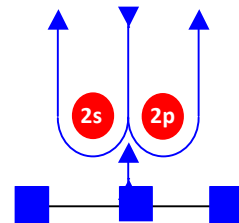
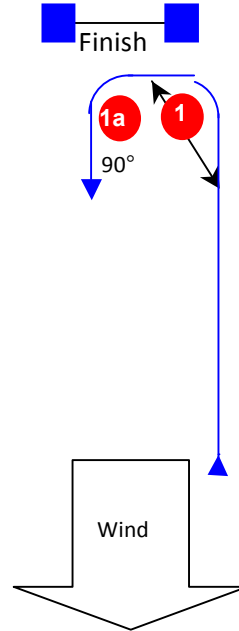


Start/Finish

Course 4

Signal	Mark Rounding Order
CR 4	Start – 1 – 1a – 2s/2p – 1 – 1a – Finish

Course 5



Start

Course 5

Signal	Mark Rounding Order
CR 5	Start -1 - 1a – 2s/2p -1 - 1a –2s/2p –Finish

NOTE: If the gate (mark 2s and mark 2p) is not present, mark 2 will be set in place of marks 2s and 2p, and shall be rounded to port. 2s/2p in the rounding sequence for the courses is replaced by 2.